

# Stadtwerke Werl prepares for ISO 27001 with Kentix system

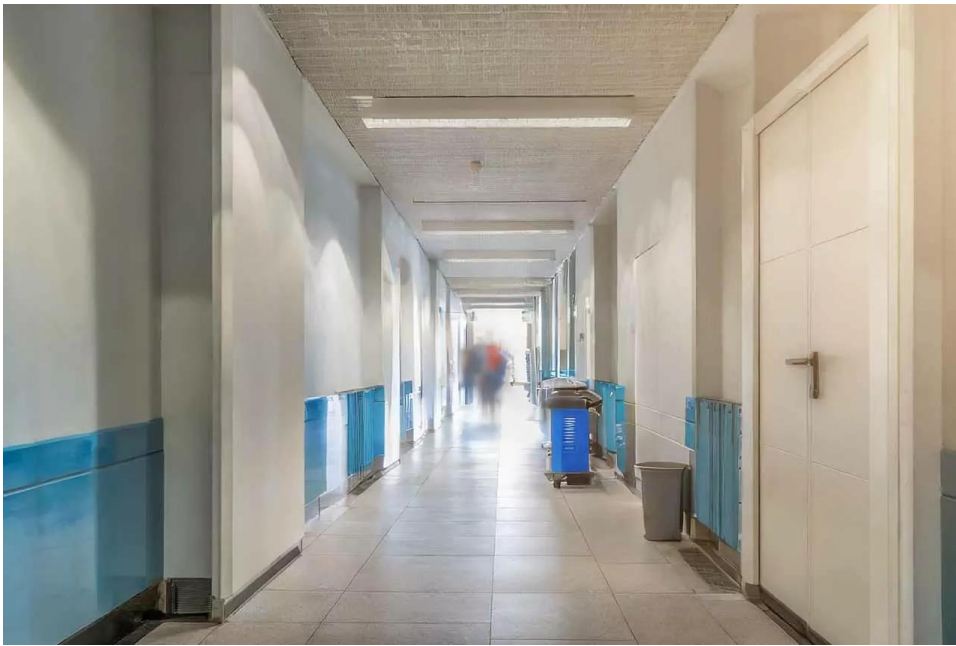


Arno Reichert, head of IT management at the Werl municipal utility, was faced with a decisive challenge: preparing for ISMS certification in accordance with ISO 27001 required a comprehensive revision of the security measures. Ensuring seamless access documentation with detailed logging became a central concern in order to meet compliance requirements. The need to closely control access to critical areas was imperative as identifying individuals entering these areas and their activities was of paramount importance. At the same time, the server and technical rooms containing the sensitive IT infrastructure had to be protected against a variety of potential threats. Unauthorized access, uncontrolled environmental conditions and the risk of fire posed a serious threat to the integrity of the system and required a comprehensive and reliable security solution.



## **Kentix provided the right solution**

Various Kentix SmartAccess locking components are used for permanent and seamless documentation of access to several doors. Thanks to the Kentix system topology, every locking point is online 24/7. All processes at the doors are logged immediately and access authorizations can be granted or revoked in real time. The door status (open/closed) also always remains in the view of those responsible. In the server and technical rooms, Kentix SmartMonitoring MultiSensors monitor hazards such as temperature, humidity, dew point, early fire detection (CO gas), movement, air quality, sabotage, etc. The Kentix AlarmManager PRO serves as a reporting and management center. It combines the individual sensor readings from the MultiSensors in a central management dashboard and makes them available to the Paessler PRTG monitoring system.



Kentix offers a wide range of security solutions to help companies prepare effectively for ISO 27001 certification. With innovative technologies such as the MultiSensor-TI, Kentix enables comprehensive monitoring and documentation of critical parameters that are essential for meeting the strict ISO 27001 requirements. The integration of the KentixONE software enables centralized management and seamless integration into existing monitoring systems. By using SmartAccess locking components and SmartMonitoring MultiSensors, companies can ensure seamless monitoring and documentation of access and environmental conditions in sensitive areas. The integration of the Kentix AlarmManager PRO as a central reporting and management center provides a comprehensive overview of all security parameters and facilitates integration into existing security infrastructures. Kentix thus supports companies in meeting the requirements of ISO 27001 certification and effectively protecting their IT infrastructure.

By implementing Kentix's MultiSensor-TI, we at Stadtwerke Werl are able to monitor several top parameters simultaneously, which has proven to be a considerable advantage. In the past, this required the use of several components, which was both costly and time-consuming. A single MultiSensor is now all that is needed to ensure comprehensive and reliable environmental monitoring, including early fire detection. The integration of the KentixONE software enables centralized and uncomplicated management, which ensures seamless integration into our existing monitoring systems. We rely on SNMP and use our already

established Paessler PRTG to monitor the alarms, which has significantly improved the efficiency and effectiveness of our security system.

*Arno Reichert, IT Management*

## **Comprehensive preparation for ISO certification is simple and straightforward with Kentix**

Even though Kentix's origins – its home, so to speak – lie in the server room and its monitoring, the possibilities opened up by IoT technology are almost limitless. The monitoring solution is used practically everywhere where environmental conditions need to be monitored or access needs to be controlled and regulated. The example of Stadtwerke Werl is an impressive demonstration of the wide range of possible applications for Kentix monitoring solutions.