



Description:

Access control for industry, storage and logistics as a hard-wired IP solution

Protection of rooms and access areas (gates, barriers) against unauthorized access with a completely IP-based solution for the administration of authorizations, time-level profiles and access logging.

The door opening is done easily using RFID media and/or a PIN input to have a user specific logging. Permissions can be granted or withdrawn individually. If necessary the solution can be extended to other rooms/areas or be combined with video surveillance.

In order to secure buildings or rooms respectively concerning authorized/unauthorized access, you will need the access control system Kentix DoorLock. An IP wall reader is installed in the area of the door and connected to the Kentix network relay module which can be installed either in a flush-mounted socket directly underneath the reader or inside the room on a DIN rail.

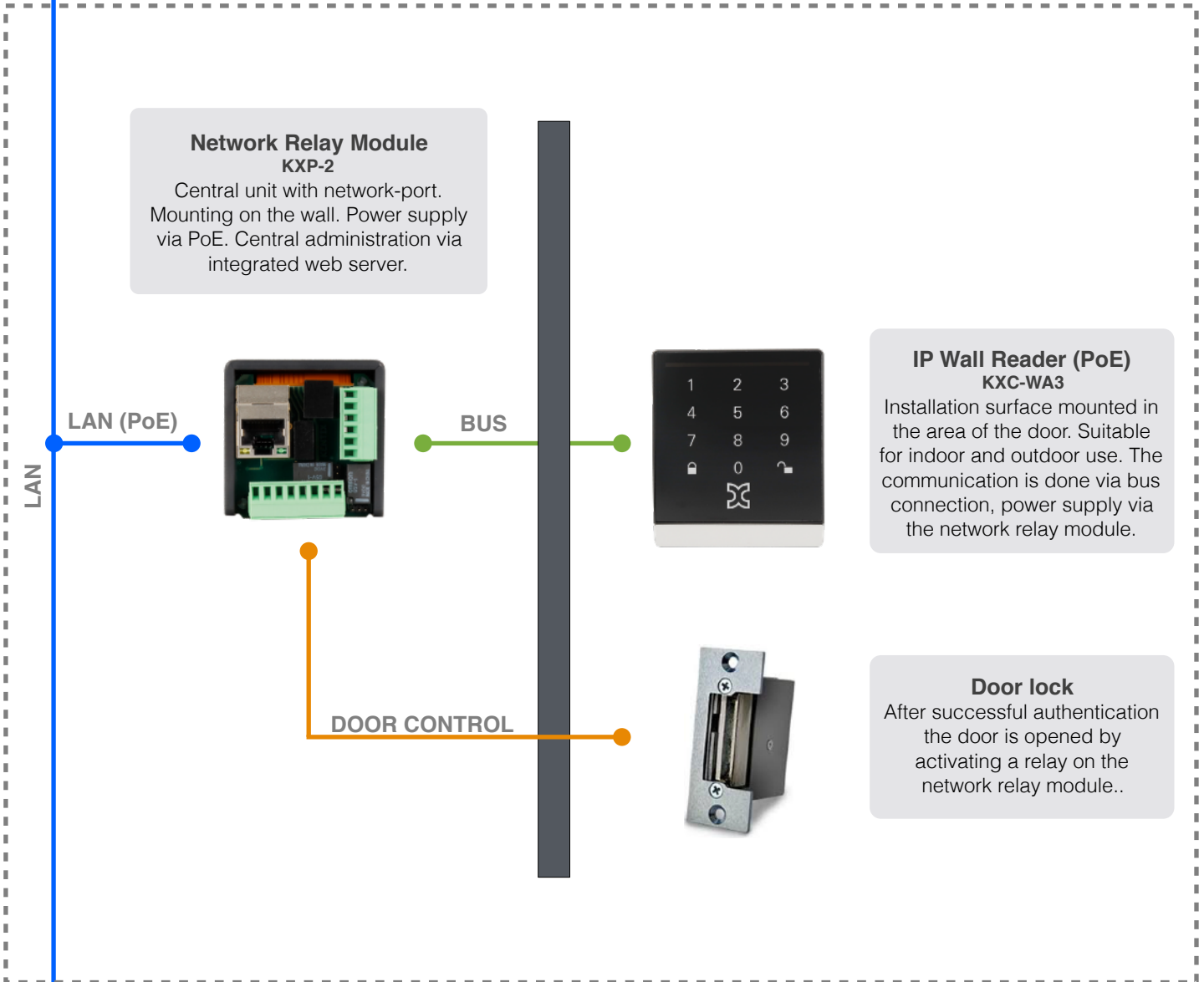
The IP wall readers are connected to the network-relay module with a fixed wiring. This module provides the central administration for up to 2 connected doors via a web interface. It also contains a logbook of all transactions. Transactions can be linked to a video image, if required.

Multiple network-relay modules can be connected to one system, so that all changes only have to be made once. This allows the system to be extended to additional areas at any time. IP wall reader and network-relay module are also fully compatible with all other DoorLock components (wireless door knob, door lever, cabinet lock) and can be combined with them.

System topology

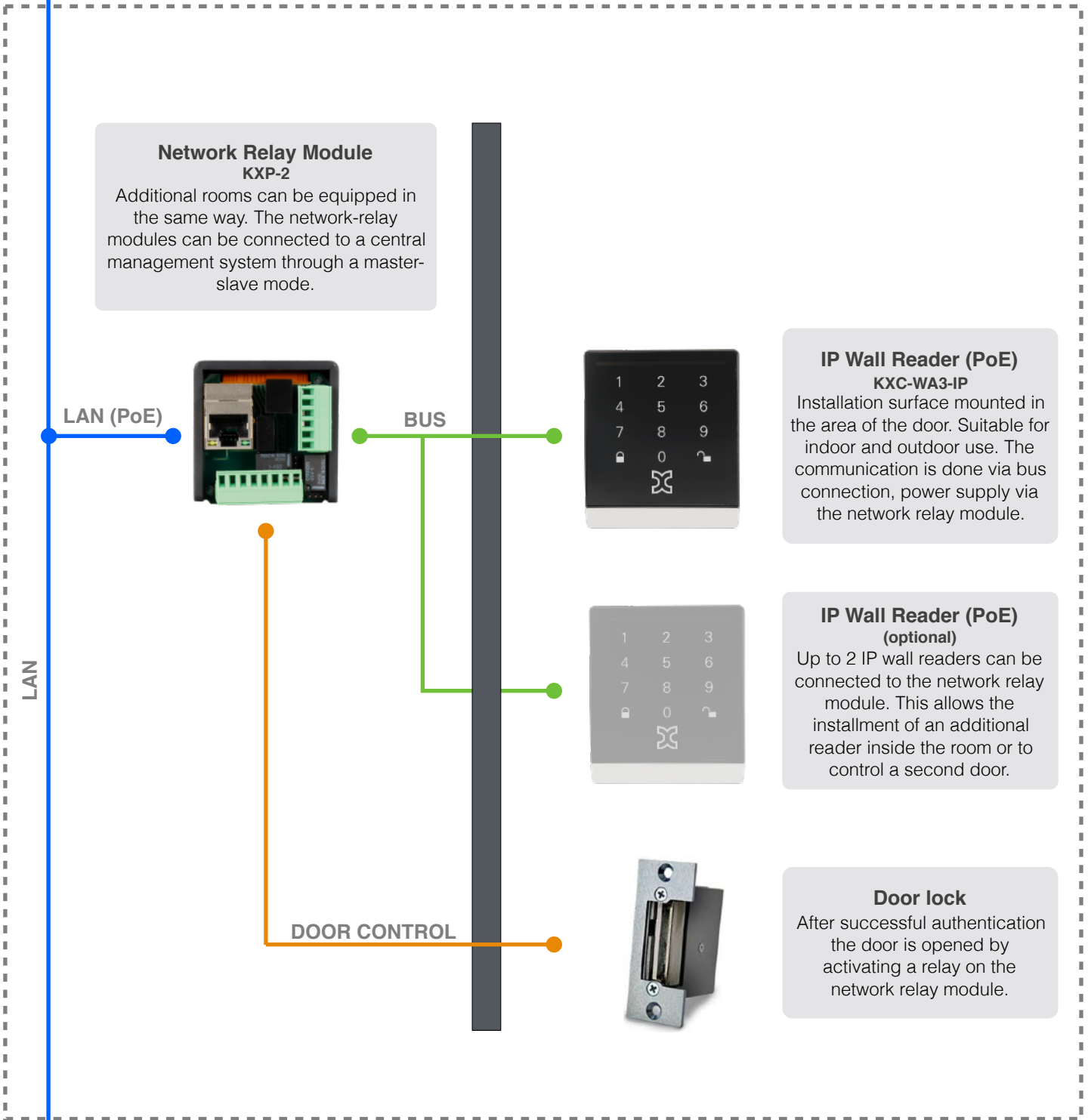


Building / Location



Installation and configuration: Network-relay module - approx. 2 hours
IP wall reader - approx. 30 minutes
(without bus- / door cabling)

additional areas or locations



Installation and configuration: Network-relay module - approx. 2 hours
IP wall reader - approx. 30 minutes
(without bus- / door cabling)

LAN



Camera (Indoor)

Each door can be connected to a network camera via an AccessPoint / network-relay module.

In doing so, each transaction or opening will trigger a short video recording which will be saved to an SD card in the AccessPoint.

LAN (PoE)



Access Point + DoorLock Series

The IP wall readers and network-relay modules are fully compatible to the wireless Kentix DoorLock products. Additional rooms can also be equipped using the wireless DoorLock components.

LAN (PoE)



StarterSet-BASIC/-PRO

With the Kentix StarterSets, you additionally secure your rooms against burglary. The integrated motion sensor detects threats and sends out alarms, as soon as somebody enters the room without adequate authorization.

LAN

Parts list - Ordering assistance - First branch

Device name	Item number	Quantity	Price in EUR
IP wall reader incl. network-relay module	KXP-WA3-IP1	1	845,00 €

Parts list - Ordering assistance - Additional branches

Device name	Item number	Quantity	Price in EUR
IP wall reader incl. network-relay module	KXP-WA3-IP1	1	845,00 €
Expansion reader for network-relay module	KXP-WA3-IP2	1	595,00 €

Expansions

Device name	Item number	Quantity	Price in EUR
Camera	M3105-LVE	1	369,00 €
AccessPoint	KXP-16	1	475,00 €
Wireless door knob	KXC-KN1/2	1	from 320,00 €
Wireless wall reader	KXC-WA1/2	1	from 400,00 €
Wireless Door lever	KXC-LE	1	from 390,00 €
StarterSet-BASIC/-PRO (AlarmManager, MultiSensor-RF)	KSS-BASIC / KSS-PRO	1	from 950,00 €

All prices are list prices plus VAT.
Our offer is only addressed to business customers.