



## **Description:**

### **Access control for offices across branches**

*Protection of non-public doors in or outside the building against non-authorized access across multiple branches.*

*The administration of users and authorizations for single branches ought to be done centrally and integrate all sites into one system in order to keep the administration effort small. All access is documented in a central logbook. Additionally, critical areas are to be video controlled for an even higher level of security.*

For the protection of the building or rooms respectively concerning authorized/unauthorized access, you will need the access control system Kentix DoorLock. The doors are equipped with the Kentix Wireless Knob which is connected to the Kentix AccessPoint via radio.

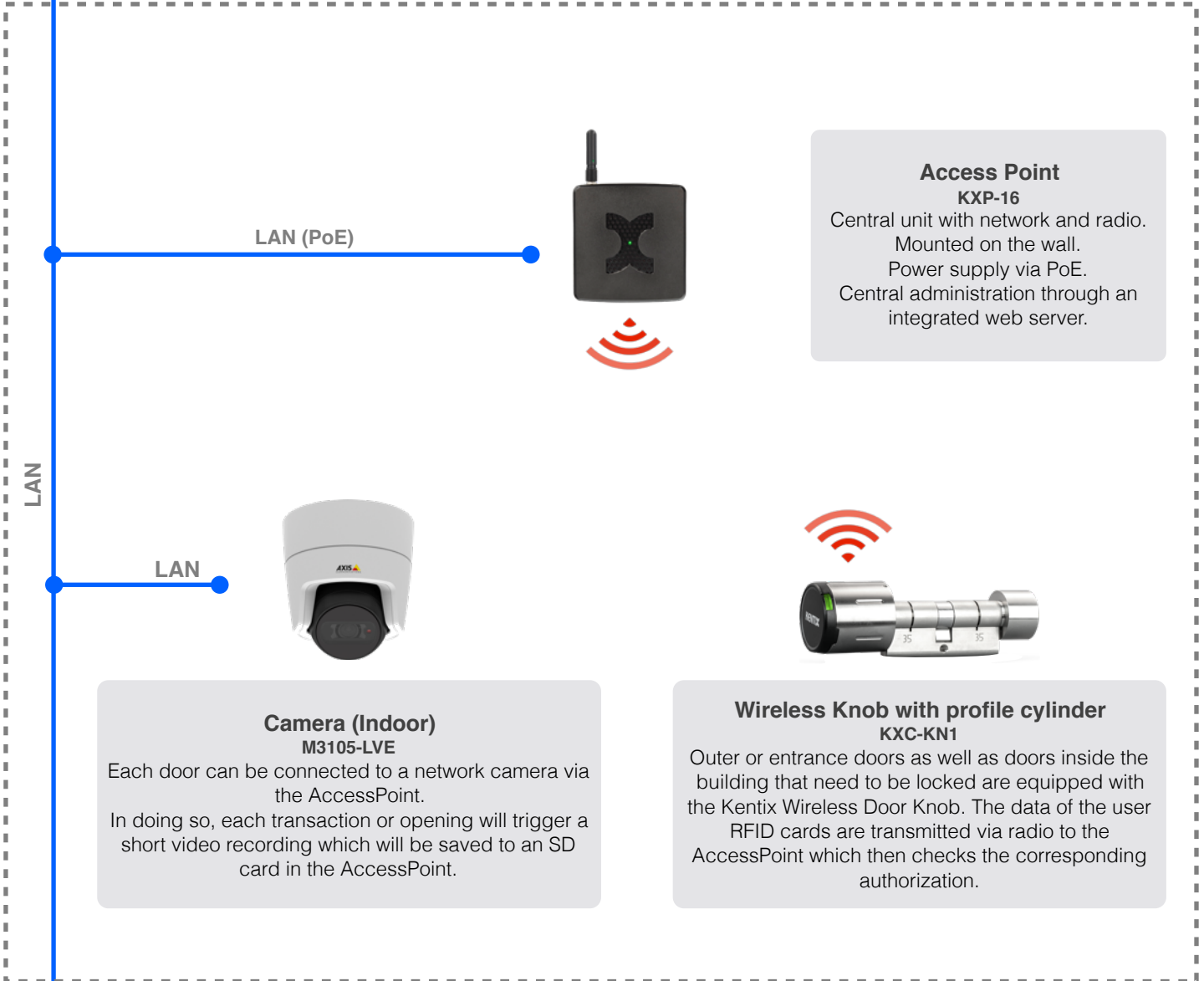
The AccessPoint takes care of the central administration for all locking components in the system via a web interface. At the same time, it contains a central logbook of all transactions. Transactions in the entrance area are automatically connected with a video picture sequence.

Multiple AccessPoints can be connected to one system so that changes only need to be made once. This way, the site can always be expanded with additional branch locations.

# System topology



## Branch / Location



**Access Point**  
**KXP-16**  
Central unit with network and radio.  
Mounted on the wall.  
Power supply via PoE.  
Central administration through an integrated web server.

**Camera (Indoor)**  
**M3105-LVE**  
Each door can be connected to a network camera via the AccessPoint.  
In doing so, each transaction or opening will trigger a short video recording which will be saved to an SD card in the AccessPoint.

**Wireless Knob with profile cylinder**  
**KXC-KN1**  
Outer or entrance doors as well as doors inside the building that need to be locked are equipped with the Kentix Wireless Door Knob. The data of the user RFID cards are transmitted via radio to the AccessPoint which then checks the corresponding authorization.

**Mounting and configuration: AccessPoint - approx. 2 hours**  
**Online Knob - approx. 10 minutes per door**  
**Camera - approx. 1 hour**

# System topology

## Expansions



### Wall Reader KXC-WA

Doors with motor locks, barriers or rolling gates can also be integrated into the system. For this, a suitable wall reader is available for mounting inside or outside. Different covers also available.



### StarterSet-BASIC / -PRO KSS-BASIC / KSS-PRO

With the Kentix StarterSet, you additionally secure your rooms against burglary. The integrated motion sensor detects threats and sends out alarms, as soon as somebody enters the room without adequate authorization.

LAN (PoE)



### MultiSensor-LAN KMS-LAN

Multiple sites can be equipped with the network-compatible MultiSensor-LAN. The administration is then done via the same central AlarmManager.

LAN (PoE)

LAN

## Parts list - Ordering assistance

Device Name	Item Number	Quantity	Price in EUR
AccessPoint	KXP-16	1	475,00 €
Wireless Knob for inner or outer doors (IP55/65)	KXC-KN1/2	1	from 320,00 €
Profile cylinder	KXC-80-AABB	1	from 80,00 €
Camera	M3105-LVE	1	369,00 €

## Expansions

Device Name	Item Number	Quantity	Price in EUR
Wall Reader	KXC-WA	1	from 400,00 €
StarterSet-BASIC/-PRO (AlarmManager, MultiSensor-RF)	KSS-BASIC / KSS-PRO	1	from 950,00 €
MultiSensor-LAN	KMS-LAN	1	475,00 €

All prices are list prices plus VAT.  
Our offer is only addressed to business customers.